



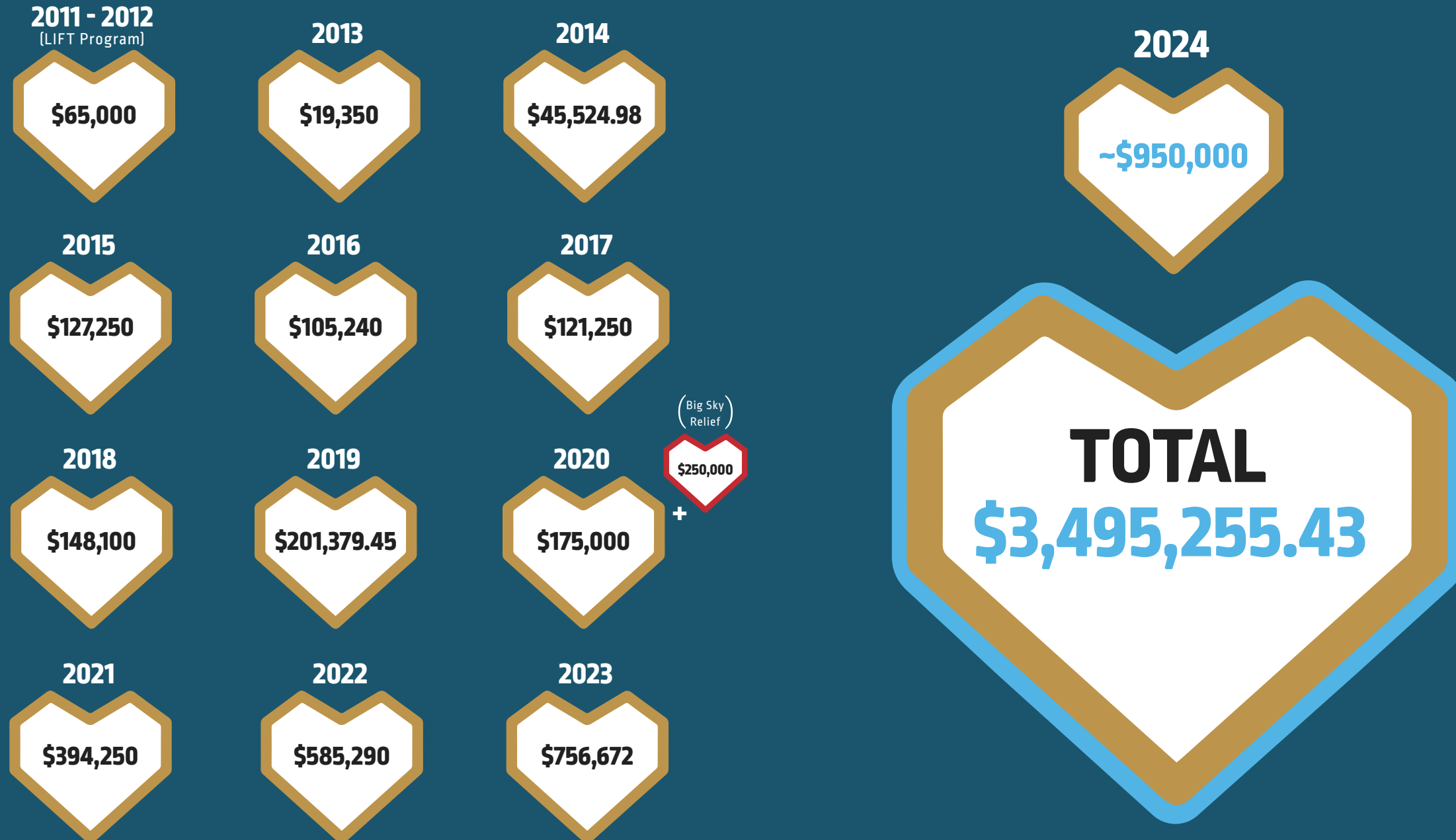
GRANT MAKING

— MISSION STATEMENT —

The Spanish Peaks Community Foundation strategically directs the generous contributions of our members to meet the needs and support the quality of life of those living and working in the Big Sky community.

— GRANT TIMELINE —

(GRANTS AWARDED TO LOCAL NONPROFITS SINCE 2013)



— \$895,000 IN GRANT AWARDS — FALL 2023 + SPRING 2024

COMMUNITY SERVICES

38%

CONSERVATION & RECREATION

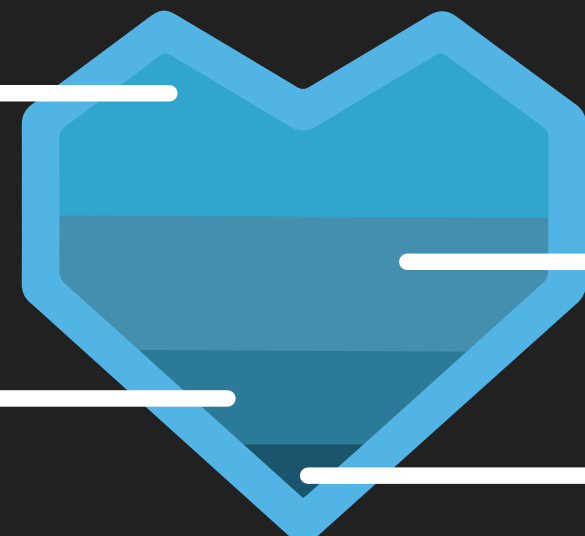
25%

EDUCATION & YOUTH PROGRAMS

30%

ARTS & CULTURE

7%



WHERE WE GAVE THIS YEAR

♥ COMMUNITY SERVICES

Big Sky Bandage
Big Sky Bravery
Big Sky Community Housing Trust
Big Sky Community Food Bank
Bridgercare
Haven
Wellness in Action (WIA)
One Valley Community Foundation
Cancer Support Community Montana
Big Sky Community Organization (BSCO)

♥ EDUCATION & YOUTH PROGRAMS

Big Brothers Big Sisters of Big Sky Country
Big Sky Discovery Academy
Big Sky School District #72
Big Sky Ski Education Foundation
Child Care Connections
Friends of the Big Sky Community Library
Friends of Big Sky Education (FOBSE)
Greater Gallatin United Way
Morningstar Learning Center

♥ ARTS & CULTURE

Arts Council of Big Sky
Warren Miller Performing Arts Center (WMPAC)
Big Opportunities
Bozeman Symphony Society
Friends of Montana Shakespeare in the Parks

♥ CONSERVATION & RECREATION

Big Sky Biggie
Big Sky Community Organization (BSCO)
Eagle Mount Bozeman
Gallatin River Task Force
Grow Wild

GRANT GIVING 2023

GRANTS 2024 YTD

EDUCATION & YOUTH PROGRAMS

41.3%

COMMUNITY SERVICES

28.2%

COMMUNITY SERVICES

38%

EDUCATION & YOUTH PROGRAMS

30%

CONSERVATION & RECREATION

23.3%

ARTS & CULTURE

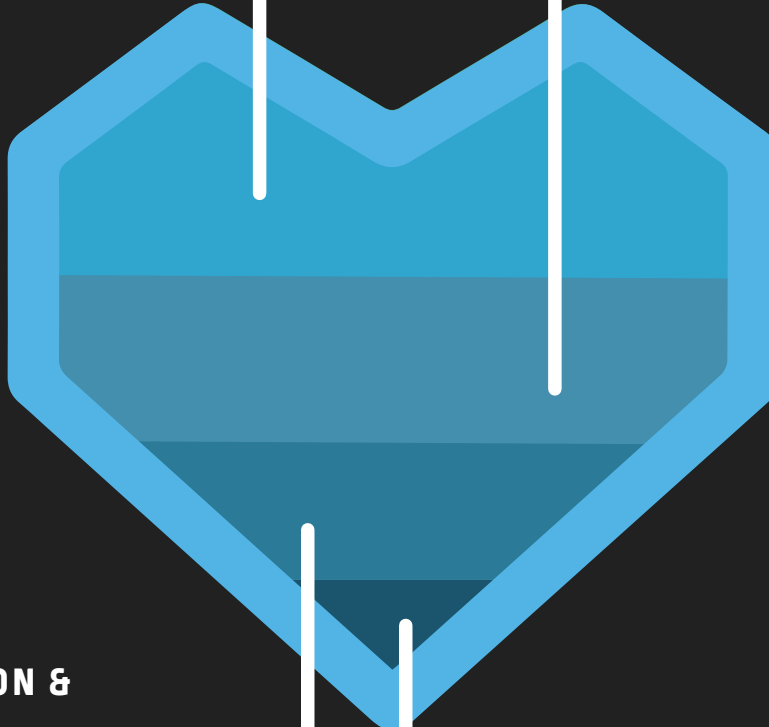
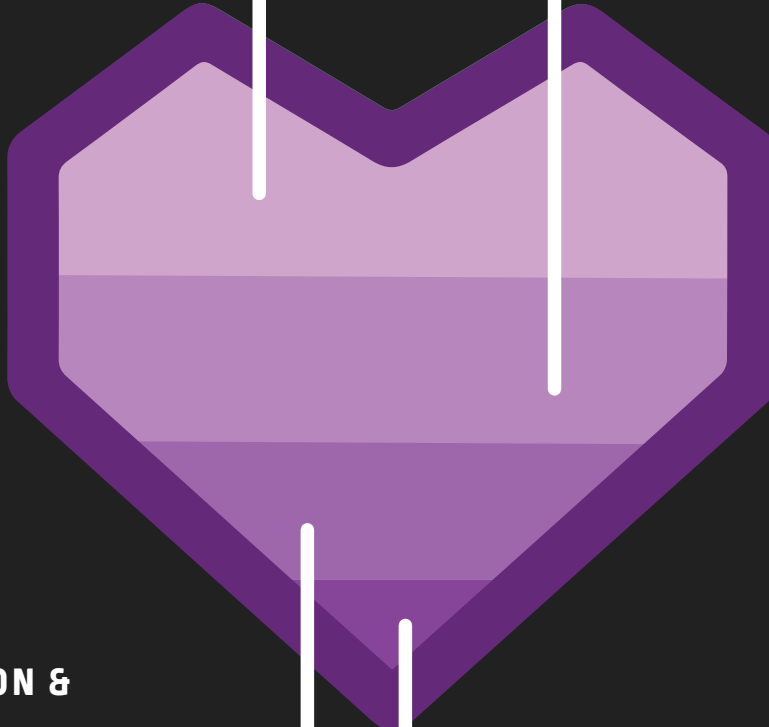
7.2%

CONSERVATION & RECREATION

25%

ARTS & CULTURE

7%



— APPLY FOR A GRANT —

SPCF GIVING PILLARS:

*Community Services, Education & Youth Programming,
Environmental Services, & the Arts*

SPRING GRANTS

*April 1st is the deadline for
May 1st grant consideration.*

FALL GRANTS

*October 1st deadline for
November 1st grant consideration.*

***SPCF prioritizes programs that make the greatest community impact,
multiple funding sources, and sustainable budgets.***

Generally speaking, SPCF does not fund salaries, capital investment projects, events, and/or operational expenses.

— WHAT MAKES A STRONG GRANT REQUEST FOR SPCF FUNDING? —

THE SPCF BOARD SAYS:

- *A grant that helps solve a problem for the people living and working in Big Sky.*
- *Clarity of impact to the BS community - how will the program work and who will it serve*
 - *Alignment with our mission statement, articulate and compelling*
 - *Demonstrates a strong need for funding that can not be found elsewhere that will provide a direct benefit to underserved members of the community*
 - *Local Impact, proven need, clearly defined*
 - *single biggest impact of the funding*
- *it's all about the scope of the impact vs. trying to address worthwhile projects that impact a very small population*

— GRANT REPORTS —

Reports help the Foundation track the progress of programs and projects and ensure proper oversight of grants awarded.

The report should be submitted with your application for the following grant cycle.

The Foundation will not release grant payment for future grants until all report requirements are complete. Please do not use this report for future support requests.

Grant Reporting Forms are available via Submittable. The reports are due 6 months after the grant is awarded. Please contact SPCF if you would like to submit a report 12 months after the grant is awarded due to program scheduling, other circumstances, etc.



DESIGNED BY:  PEAK CREATIVE
DESIGNS